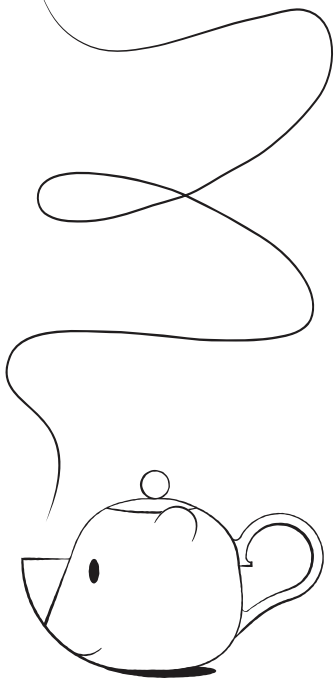


*It's  
Tea Time,  
Baby!*



**Wombat's**

**CAFÈ**

**freya - elderberry-ginger** 4.2

hibiscus, lemongrass, elderberry, ginger, natural flavouring, sweet blackberry leaf, liquorice root, sultana, lemon peel, elderflower, mallow blossom

**pauline - strawberry-mint** 4.3

apple, hibiscus, whole peppermint leaf, fresh strawberry, peony blossom

**breakfast tea - english leaf blend** 4.2

balanced blend of exquisite assam, sumatra and ceylon tea produces a round, subtle cup — elegant and finely spicy

**tai shan - misty green** 4.5

a chameleon of taste from zhejiang, one of china's finest tea growing regions — this amazing tea is characterised by a wonderful flavour and a delicious aroma

**e. piaf - earl grey à la rose** 4.2

black tea (china/ceylon blend), rosebud, rose petal, bergamot flavouring

**strawinski - assam leaf blend** 4.2

finely processed leaves from selected assam lots with light leaf tips resulting in a strong, dark cup with an earthy-spicy flavour and malty note — spicy and heavy on the nose

check our vitrine for an  
assortment of delicious sweets  
to enjoy with your tea —————