

7x
awarded
Best Large
Hostel Chain
Worldwide



WOMBAT'S FACT SHEET

INSPIRING PEOPLE TO TRAVEL

"We want to make our guests smile and share our unique Wombat's atmosphere so they can leave us with great experiences and unforgettable memories in their backpacks"



Our Key Performance 2019

By
Travellers
For
Travellers

€19.2m

Total Operational Revenue

83%

Group Bed-Occupancy

2,813

Total Number of Beds

Private Room €35-85
Dorm Room per bed €13-25

Average price per night

The WomExperience – Reliably Unexpected Reliable Hotel Standards + Unexpected Encounters = True Wombat's Hostel Feeling

Wombat's is more than just an accommodation, Wombat's is a philosophy. Since 1999**.
To us this means...

- Travel maniacs as guests and staff
- Lively community areas (lobby, chill-out area, WomBar)
- Guest kitchen
- Guest laundry
- Free Wi-Fi in all areas
- Daily cleaning
- Solely ensuite rooms
- Full breakfast buffet
- 24h reception
- Free & secure luggage storage
- Superior Ratings (9x Most popular hostel)
- Experienced & tested

"We create spaces where travellers feel invited to come together and connect. The world needs places and companies where people can stay or work, share their passion, creativity and responsibility."

Who Likes To Stay At Wombat's

"Most of our guests are in their twenties and come from all over the world. But those young at heart definitely fancy and enjoy staying with us as well."

Individual Travel Maniacs: **80 %**
Group Travel Maniacs: **20 %**
Schengen: **33 %**
Other Nationalities: **67 %**

B2B partners:
European tour organisers for FITs
(e.g. BusAbout, Contiki, DB)



What A Wombat's Looks Like



Lobby



Guest Kitchen



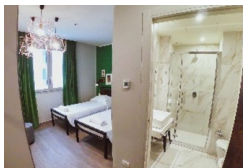
Common Area



Dorm Room



Breakfast area & Bar



Twin Room

What Defines A Wombat's Hostel?

Gross floor area 3,500 – 6,000m²
GFA per bed 1:10m²
Public Area 500 – 700m²
Beds total 350 – 600
Rooms total 75 – 150

Room-Mix
Double room 25-30%
4 bed room 40%
6 bed room 30-35%
8 bed room if necessary

"Although: Wombat's is very flexible and can adapt to a variety of properties. Our heart of all hostels are all common areas, where nomads can connect and share their stories."

Current Properties

Budapest, London, Munich, Venice, Vienna - The Lounge, Vienna - The Naschmarkt

Pipe-Line Properties

Milan, Munich - Werskviertel, Prague, Salzburg

Where We Want To Go Next

Central Europe: Brussels, Paris, Vienna
Northern Europe: Amsterdam, Berlin, Copenhagen, Dublin, Hamburg, Stockholm
Southern Europe: Florence, Madrid, Rome

Our Project Terms

- Long-term lease contract - 20 years
- Double net agreement
- Bank guarantee

